



DES COTEAUX ROB
 LA SAPINIÈRE FACYBER VG-88-3YR-CAN
 FOREVER SCHOON PERFECTER
 LA SAPINIÈRE FACYBEYÂ EX-90-2E-CAN
 PALMYRA TRI-STAR REALITYÂ
 LA SAPINIÈRE FACYBE VG-86-5YR-CAN

GPA LPI +2887 PRO\$ 1232

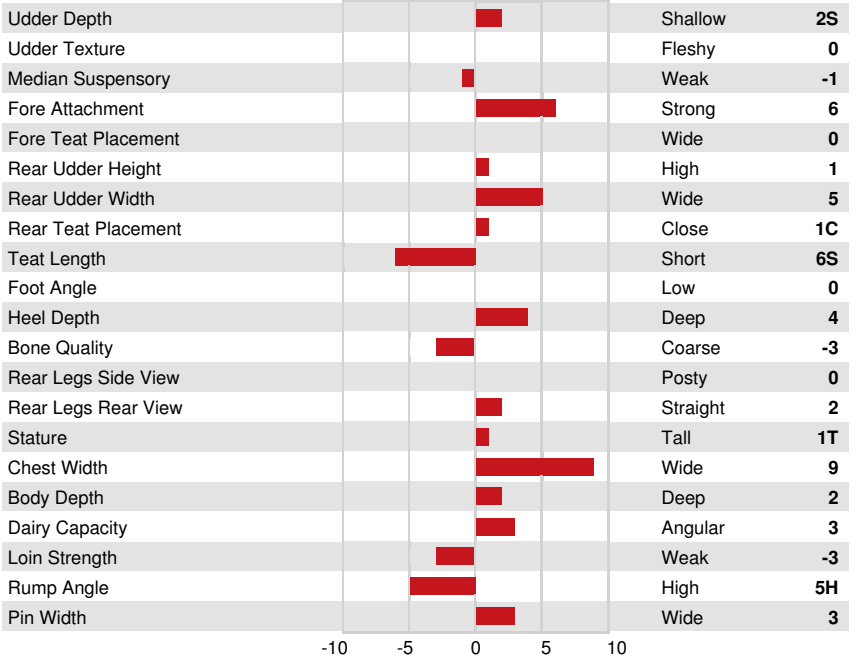
TF AMF AH1F AH2F AHCF

Reg. #: AYCANNM111432820 aAa: 543621 DMS:
 Born: 09/27/2019 Kappa Casein: AA Beta Casein: A1A2

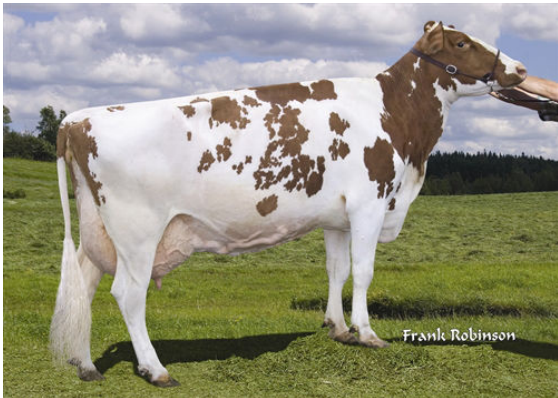
PRODUCTION		G Herds	G Daughters	62% Rel	GPA 24*APR	
Milk kg	702			Fat %	Protein kg	Protein %
				+0.45	36	+0.13

HEALTH & REPRODUCTION		Immunity	102
Herd Life	100	Calf Immunity	104
Somatic Cell Score	99	Calving Ability	101
Daughter Fertility	97	Daughter Calving Ability	97
Body Condition Score	105	Milking Speed	100
Mastitis Resistance	100	Milking Temperament	101
Lactation Persistence	99	Metabolic Disease Resistance	102

CONFORMATION		G Herds	G Daughters	50% Rel	GPA 24*APR	
Conformation	3			Dairy Strength	3	
Mammary System	2			Rump	1	
Feet & Legs	3					



LA SAPINIÈRE FACY-B
 FOURTH DAM



LA SAPINIÈRE FACY
 FIFTH DAM