



ORRARYD
 KAMOURASKA POKER RUBIS VG-86-4YR-CAN 15*
 DES CHAMOIS POKER
 KAMOURASKA PETERSLUND RUBY VG-87-3YR-CAN 10*
 PETERSLUND
 KAMOURASKA JERRY VIRVANA EX-90-5YR-CAN 9*

GLPI +2884 PRO\$ 1086

TF AMF AH1F AH2C AHCF

Reg. #: AYCANM108719731 aAa: 561432 DMS: 345.456
 Born: 11/29/2013 Kappa Casein: AE Beta Casein: A1A2

PRODUCTION 103 Herds 275 Daughters 98% Rel GEBV 24*APR

Milk kg	Fat kg	Fat %	Protein kg	Protein %
686	51	+0.27	44	+0.24

Daughter Average (ME) Milk **9,892 kg** Fat **417 kg** Protein **352 kg**

HEALTH & REPRODUCTION Immunity **98**

Herd Life	98	Calf Immunity	97
Somatic Cell Score	100	Calving Ability	109
Daughter Fertility	97	Daughter Calving Ability	102
Body Condition Score	93	Milking Speed	104
Mastitis Resistance	99	Milking Temperament	105
Lactation Persistency	101	Metabolic Disease Resistance	94

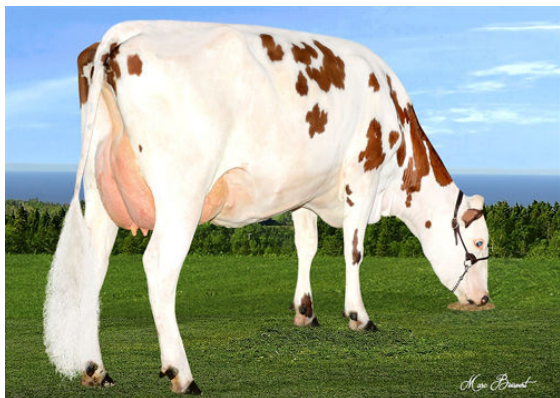
CONFORMATION 94 Herds 240 Daughters 96% Rel GEBV 24*APR

Conformation	1	Dairy Strength	-3
Mammary System	0	Rump	-1
Feet & Legs	5	GP or Better %	64

Udder Depth		Deep	3D
Udder Texture		Soft	2
Median Suspensory		Strong	2
Fore Attachment		Loose	-2
Fore Teat Placement		Close	4C
Rear Udder Height		Low	0
Rear Udder Width		Wide	6
Rear Teat Placement		Close	7C
Teat Length		Short	12S
Foot Angle		Steep	6
Heel Depth		Deep	3
Bone Quality		Flat	2
Rear Legs Side View		Posty	3S
Rear Legs Rear View		Straight	4
Stature		Short	6S
Chest Width		Narrow	-3
Body Depth		Shallow	-2
Dairy Capacity		Angular	3
Loin Strength		Weak	-1
Rump Angle		Sloped	5L
Pin Width		Narrow	-2



GUIMOND REVOLUTION DOMINANTE



GUIMOND REVOLUTION DOMINANTE