



GENIAL SITUATION
 KAMOURASKA JUPI UBY VG-86-3YR-CAN 7*
 KILDARE JUPITER
 KAMOURASKA PETERSLUND RUBY VG-87-3YR-CAN 10*
 PETERSLUND
 KAMOURASKA JERRY VIRVANA EX-90-5YR-CAN 9*

GLPI +2825 PRO\$ 549
 TF AMF AH1C AH2F AHCF

Reg. #: AYCANN107821541 aAa: 243156 DMS: 234
 Born: 01/03/2013 Kappa Casein: AA Beta Casein: A2A2

PRODUCTION				
166 Herds		512 Daughters		99% Rel
GEBV 24*AUG				
Milk kg	Fat kg	Fat %	Protein kg	Protein %
440	2	-0.19	21	+0.07

Daughter Average (ME) Milk **9,612 kg** Fat **383 kg** Protein **332 kg**

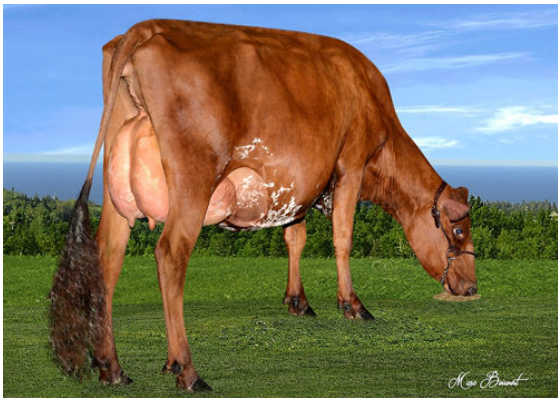
HEALTH & REPRODUCTION		Immunity	95
Herd Life	107	Calf Immunity	99
Somatic Cell Score	98	Calving Ability	103
Daughter Fertility	99	Daughter Calving Ability	99
Body Condition Score	101	Milking Speed	104
Mastitis Resistance	98	Milking Temperament	94
Lactation Persistence	105	Metabolic Disease Resistance	102

CONFORMATION		154 Herds	483 Daughters	97% Rel	GEBV 24*AUG
Conformation	11	Dairy Strength	8		
Mammary System	11	Rump	3		
Feet & Legs	8	GP or Better %	81		

Udder Depth			Shallow	3S
Udder Texture			Soft	12
Median Suspensory			Strong	10
Fore Attachment			Strong	11
Fore Teat Placement			Close	3C
Rear Udder Height			High	5
Rear Udder Width			Wide	5
Rear Teat Placement			Close	2C
Teat Length			Long	1L
Foot Angle			Steep	5
Heel Depth			Deep	10
Bone Quality			Flat	5
Rear Legs Side View			Posty	0
Rear Legs Rear View			Straight	4
Stature			Short	1S
Chest Width			Wide	3
Body Depth			Deep	4
Dairy Capacity			Angular	6
Loin Strength			Strong	1
Rump Angle			High	1H
Pin Width			Wide	3



DES ROCHES BIGSTAR DOLCE



DES ROCHES BIGSTAR DOLCE